

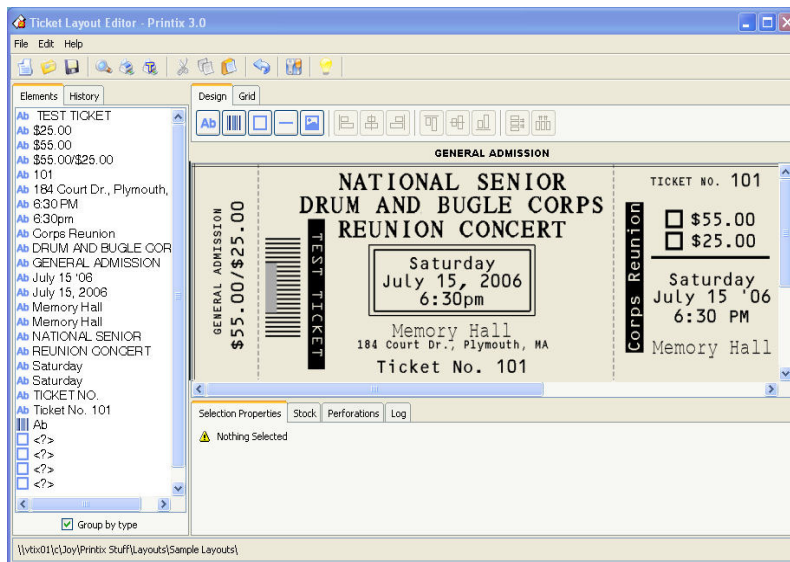
Does your venue outsource ticket printing? Would it be faster and more cost-effective to print tickets in-house? Vtix Solutions Corp. has the answer!

Introducing → **Printix Basic**

The fast, easy to use ticket printing system for your box office.

The **Printix Basic** application will assist any organization or venue that wants the speed and convenience of printing event tickets on site. All you need is our Printix software bundled together with a Practical Automation ITL thermal ticket printer (or other compatible thermal ticket printer) and you can be printing professional quality tickets to your next event.

The Printix Ticket Layout Editor has a set of powerful tools that enable you to input event information on the front of your ticket. You can also set basic parameters like the total number of tickets to print, starting ticket number and print order. It's simple to learn and use, and ultra convenient.



- Print an unlimited number of tickets per event.
- Track ticket layouts by venue
- Save layouts for future use
- Tickets print up to 4" per second on generic thermal ticket stock available from Vtix or ask us about customizing
- Select the printer font and then set the horizontal and vertical stretch factor
- Add boxes, lines and bar codes. Invert/rotate text in any direction
- WYSIWYG printing

Perfect for venues ticketing general admission functions, such as night clubs, bars, community centres, schools, festivals, fundraisers and other entertainment and sporting events.

If you print in excess of 8,000 tickets per year, you can use your own custom thermal stock as well. Have your colour logo printed on the front of the ticket and sell the back to advertisers or sponsors. This is an incredible opportunity to offset the cost of your stock and create additional revenue for your organization.

Ask about our package deals which includes; software, ticket printer, printer cable and 1 bundle (1000 tickets) of Vtix generic thermal ticket stock.

Cost: \$395.00

Software only. Not including applicable taxes.

For more information please contact Vtix at:
Toll Free: 1-888-961-6111 Tel: 604-241-7292
Email: sales@vtix.com

Practical ITL Thermal Ticket Printer





Printix Basic

Benefits:

- ▶ - Low-cost software application for use with external thermal ticket printer
- professional quality tickets printed in-house
- easy to learn and use
- powerful ticket layout editor provides unlimited flexibility
- WYSIWYG rendering

Features:

- ▶ - General Admission, Pass or Raffle formats
- selection of printer fonts available in standard or inverted format
- stretch text vertically or horizontally
- rotate text from 0° to 270°
- add barcodes, boxes and vertical or horizontal lines
- powerful tools for aligning and distributing fields
- sequential numbering available at any starting value or interval
- print tickets in ascending or descending order
- track number of tickets printed by venue or layout or both
- set border/background colours and perforations to match your stock
- ticket layout automatically adjusts to printer DPI setting
- apply a background grid and snap selections to grid
- zoom in or out for detailed design
- print an unlimited number of tickets per layout and save for future use
- multiple selection tool for group editing
- supports most ticket printers utilizing standard Ticket Printer Language

System Requirements

- ▶ - PC's with 256MG RAM and a 40GB HD
- Operating system must be Win2000 or XP

Printer:



- ▶ Practical Automation ITL2002 thermal ticket printer
- for low to moderate ticket printing applications
- compact size; 8" long x 6.65" wide x 5.25" high
- high print speed; 3.5 inches/second or 88.9 mm/second
- automatic ticket loading; external ticket feed
- tickets are dispensed using a tearbar
- ticket width 2" at 203 DPI
- Parallel interface
- external input power supply and 115V line cord
- 6' parallel printer cable included
- ticket jam detector

Ticket Stock:

- ▶ Vtix Generic
- thermal coated 7.5 mm., 1 31/32" x 5 1/2", 1 colour front
- fan-fold, 1000 tickets per bundle
- available in 8 different border/background colours
- 2 perforations; .5" from right leading edge and 3.3125 from left edge

Distributed by **Vtix Solutions Corp.**

8531 Fairway Road, Richmond, BC, Canada, V7C 1Y5
Tel: 604-241-7292, Fax: 604-241-7727, Email: sales@vtix.com